

10. Changeover from tank to pressure or pressure to tank control EASYRO 150/300/600

Changeover from level-controlled system to pressure-controlled system or pressure-controlled system to level-controlled system for EASYRO® 150 /300/600

Preparation

- Transfer the program you want to the memory card.
- Then remove the tank sensor at the back of the EASYRO.
System – **with level-controlled system**
- Pure water outlet of the EASYRO®: Please insert a stopcock and leave it open.
- Open the water infeed.
Note: The water infeed should always pass through a pre-filter!
- Now open the cover of the EASYRO system.
- Connect the system to the power supply.
- System displays “Check sensor” – **with level-controlled system**

Transferring software to the control unit

First of all, the memory card must be inserted into the control unit, please proceed as follows:

- Open the card slot on the Siemens LOGO! and insert the memory card into the card slot.
See photo



- Close the card slot.

Now the program must be transferred to the Siemens LOGO!; please proceed as follows:

- Press the ▼ arrow key until the date/time appears.



- Press **ESC**.
- Use the arrow keys to select "Stop" and confirm with **OK**, then select "YES" and confirm with **OK**.
- Then select the "Card" menu item and confirm with **OK**.



- Select the "Load Prog←Card" menu item and confirm with OK.



- Confirm "YES" with **OK**.



- Program is now saved from the memory card to the Siemens LOGO!
- When the process is complete, the main menu reappears on the display.
- Now switch off the power to the system and pull out the mains plug.

!!! Attention!!! Follow point 7.1 for new level sensors from 04-2024!!!

Changing the system from level-controlled to pressure-controlled

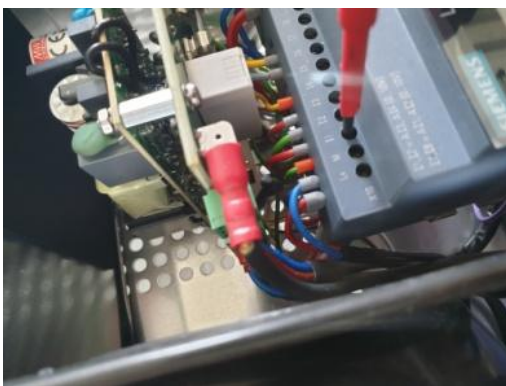
You will need a small screwdriver for the next operation.

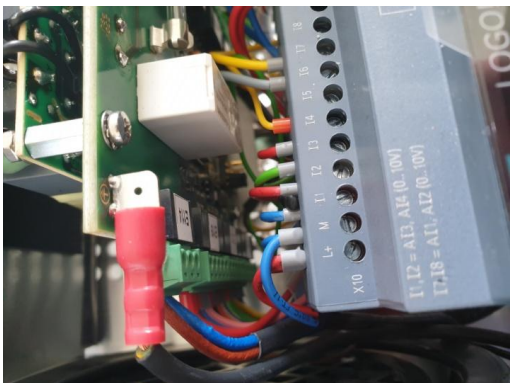
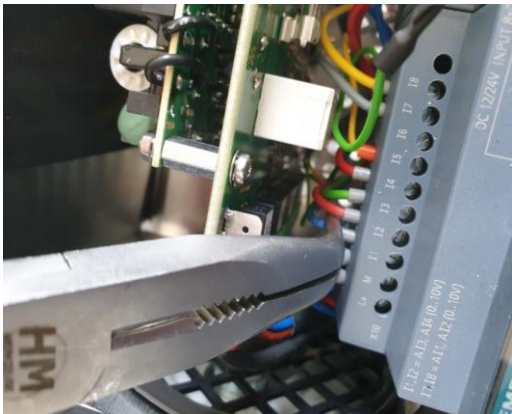
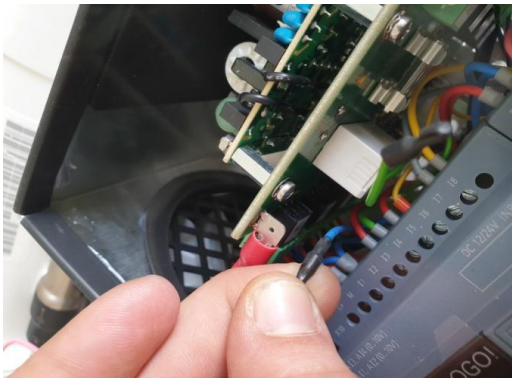
- Open connection I1 and remove and insulate the green wire.
- Strip the insulation from the blue insulated wire that is clamped next to it (between the green and red wire) and connect it to connection I1. The wire can also be exposed next to it.

Changing the system from pressure-controlled to level-controlled

You will need a small screwdriver for the next operation.

- Open connection I1 and remove and insulate the blue wire.
- Strip the green insulated wire that is fitted next to it (between the blue and red wire) and connect it to connection I1. The wire can also be exposed next to it.





- Plug the mains plug back in.
- The main menu appears on the LOGO!



- Use the arrow keys to select “Start”, confirm with **OK** and then select “YES” and confirm with **OK**.
- System runs with pressure-controlled software.
- Close the cover.
- Changeover complete.
- Now set the correct tank height.