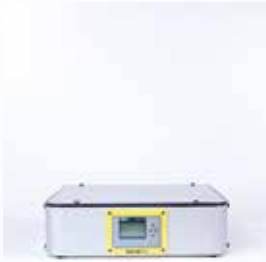
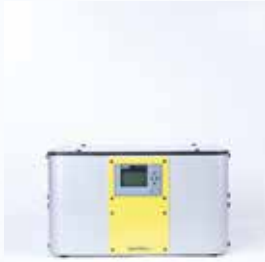




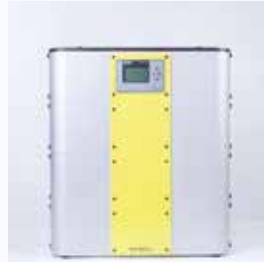
EASYRO® 150



EASYRO® 300



EASYRO® 600



EASYRO®



MAINTENANCE INSTRUCTIONS



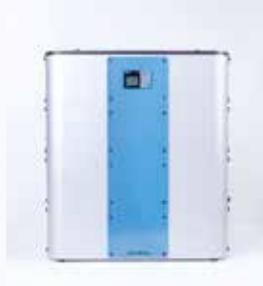
EASYRO® 60



EASYRO® 120



EASYRO® 240



EASYRO® 480

EASYRO®
drink + house

MAINTENANCE INSTRUCTIONS

EASYRO® 60/120/150/240/300/480/600

Version 2018.1

PUBLISHER

easymetal GmbH
Resselstrasse 12
A-2120 Wolkersdorf
Phone: +43 2245 20123
Fax: +43 2245 20123-45
office@easymetal.com
www.easymetal.com

© easymetal GmbH
All rights reserved.



Technical Documentation EASYRO® Water Treatment Systems© 2017 easymetal GmbH.
This information is subject to copyright laws and may not be reproduced or changed without express written permission of easymetal GmbH.

MAINTENANCE BY A TRAINED TECHNICIAN

If you are unable to carry out the maintenance with our instructions or if you prefer a trained technician services the system for any other reason, please do not hesitate to contact us.

Please make an appointment to have your system serviced.

Phone: +43 2245 20 123
Fax: +43 2245 20 123 DW 45
E-Mail: service@easymetal.com

Please consider that the maintenance takes about 1 – 2 hours.
During this time, a person must be present to open all necessary doors and gates and have access to the main water valve or tap unless this is next to the EASYRO® unit.

MAINTENANCE INSTRUCTIONS

EASYRO® 60/120/150/240/300/480/600

The display of your EASYRO® shows „CHANGE FILTER“.

The maintenance interval of 4500 operating hours has therefore expired. The system must be serviced at this time.



*Display of
EASYRO® 60/120/240/480*



*Display of
EASYRO® 150/300/600*

Please read this maintenance instruction carefully and follow the steps outlined here.
Regularly servicing your EASYRO® system ensures a long working life of the membranes.

Please prepare all parts and components before starting the maintenance process. This includes the required clean water for the cleaning solution. The amount is listed in the mixing table and on the back of the canister of your basic maintenance kit.

YOU NEED FOLLOWING FOR THE MAINTENANCE

- 1 wound thread filter, 1 μ, 10'' or 20'' depending on your system type (included in your maintenance kit)
- Cleaning concentrate for flushing the membranes (included in the maintenance kit)
- 1 canister (included in your basic maintenance kit)
- 2 tubes Ø 10 mm (included in your basic maintenance kit)
- 1 straight connector tube (included in your basic maintenance kit)
- 1 plug (included in your basic maintenance kit)
- Clean water depending on system type (water amount according to table)
- 1 Y-connector (included in the EASYRO® 600 basic equipment)
- 10 l bucket or similar container
- Disposable gloves (included in maintenance kit)
- Breathing mask (included in maintenance kit)

ONLY IF REQUIRED (NOT INCLUDED IN MAINTENANCE KITS)

- 1 activated carbon filter 10'' or 20'' depending on requirement
- 1 softener cartridge 10'' or 20'' depending on requirement



Model	Amount of Concentrate	Amount of Water
EASYRO® 60/120/150	250 ml cleaning concentrate	4.750 ml water
EASYRO® 240/300	500 ml cleaning concentrate	9.500 ml water
EASYRO® 480/600	2 x 500 ml cleaning concentrate	2 x 9.500 ml water

NO MAINTENANCE AVAILABLE

If you do not have a maintenance kit available, it is possible to delay the maintenance interval for further 50 hours of production.



NOTE

This bridging should only be used in case of emergency! After these 50 hours of production have elapsed, the EASYRO® system stops and cannot be restarted until serviced.

Please obtain your maintenance kit in time.

Bridging the maintenance for 50 hours of production:

Press the OK button to acknowledge the displayed "CHANGE FILTER."
The EASYRO® system now continues in production mode for another 50 hours.



NOTE

After expiration of these 50 hours, the display shows "ALARM STOP FILTER" (EMERGENCY STOP FILTER) and only starts after carrying out the following steps:

Please press ESC + ▼ down arrow to reset the filter.
Prepare the maintenance kit and start the maintenance as described.



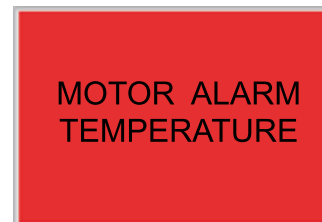


NOTE

If the following is displayed, maintenance cannot be carried until the error is fixed:

“Alarm Stop Filter”

“Motor-Temp Alarm”



GENERAL FILTER RESET FOR ALL SYSTEMS

When „ALARM STOP FILTER“ is displayed, press ESC and hold until the cursor flashes. Now press OK.

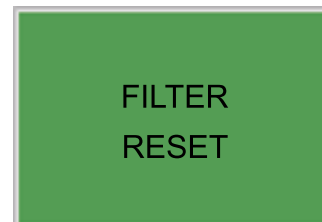
The following is displayed: 000000

Now use the arrow keys to set the number code.

Please set 000505 and press OK again.

The display now depicts „FILTER RESET“.

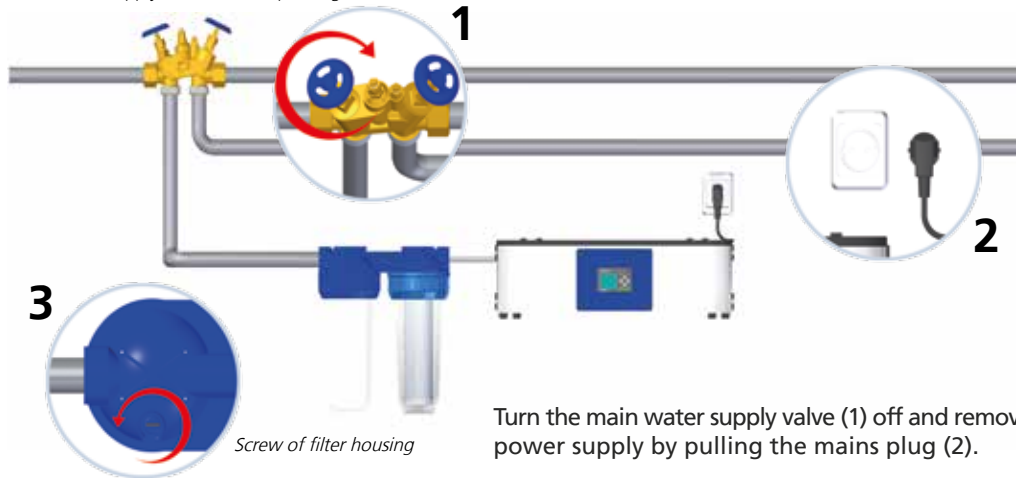
When „FILTER CHANGE“ is displayed, press ESC + ▼ down arrow to reset the filter.



PREPARING THE SYSTEM FOR MAINTENANCE

EASYRO® 60 / 120 / 240 / 480

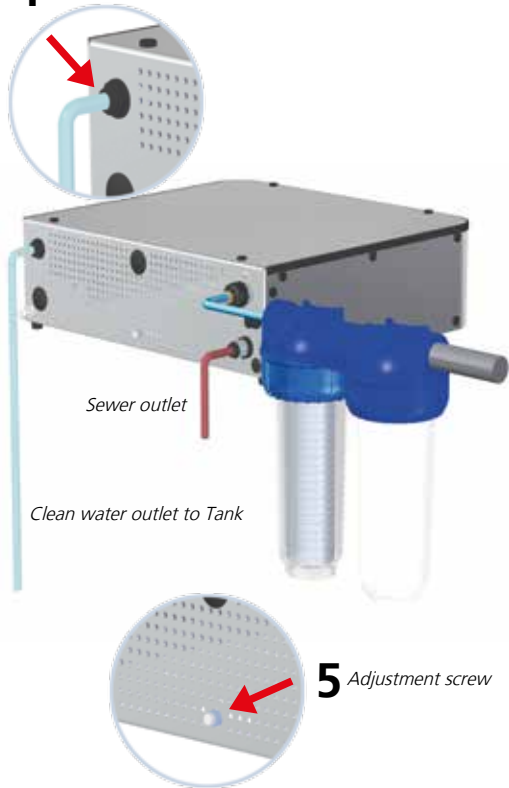
Main water supply valve (Oventrop fitting)



Turn the main water supply valve (1) off and remove the EASYRO® system from the power supply by pulling the mains plug (2).

If you use a membrane vessel, your water treatment system is pressurized. To relieve the system pressure, open the screw (3) on the filter housing with a screwdriver until the pressure can escape.

4 Clean water outlet



Disconnect the clean water outlet hose (4) from the system. This is done by pressing on the holding element to unlatch it and then pulling the tube from the connector.

Then insert the tube (included in the basic maintenance kit) into this outlet and place the end of the tube in a bucket.

Please use a suitable collecting container (bucket) according to the following amounts.

Model	Max. Output Amount
EASYRO® 60/120	approx. 5 liters
EASYRO® 240	approx. 10 liters
EASYRO® 480	approx. 20 liters

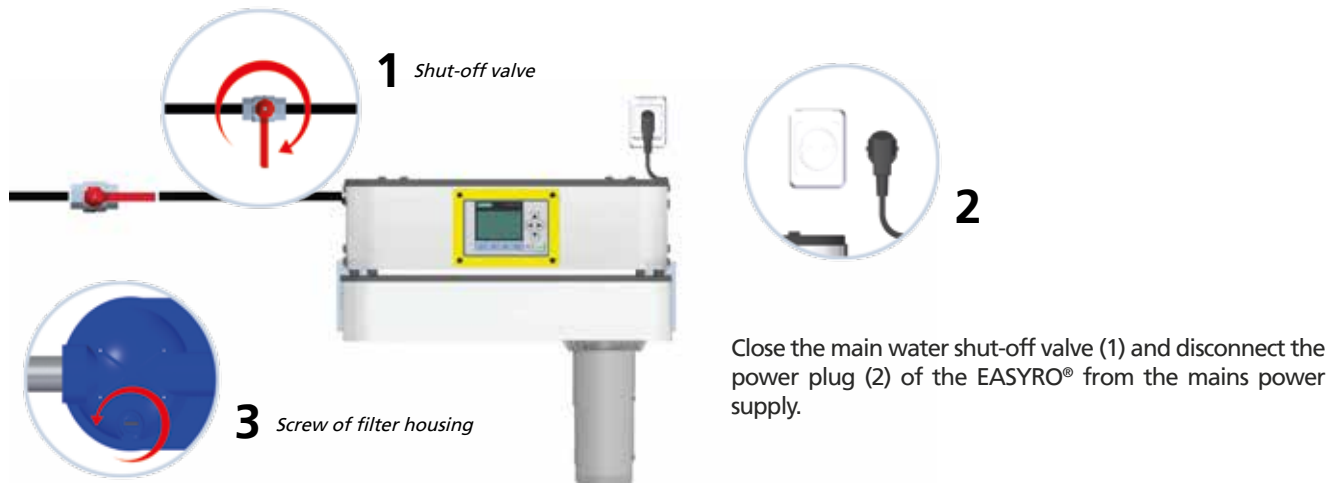
The clean water outlet remains disconnected from the tank during the entire maintenance process to avoid any residues in the drinking water tank.

5 Adjustment screw

Make sure the mixture adjustment screw (5) of the system is closed (turn clockwise to the stop). Should your system feature a setting here, remember the number of turns or mark the position so that you can reset the screw at the end of the maintenance process.

PREPARING THE SYSTEM FOR MAINTENANCE

EASYRO® 150 / 300 / 600



If you are using a membrane vessel, your water treatment system is under pressure.
To release pressure, you must turn the screw (3) of the filter housing with a screwdriver until the pressure can escape.

The EASYRO® has a clean water outlet with rejection and a clean water outlet without rejection (4).

Please disconnect the clean water tube without drainage (4) from the system. This is done by pressing on the holding element to unlatch it and then pulling the tube from the connector.

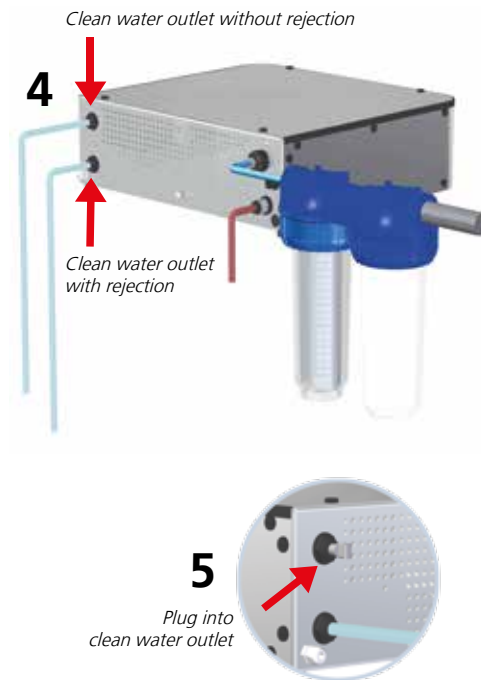
Close off this outlet with the plug (basic maintenance kit) (5).

The clean water outlet remains closed off with the plug during the entire flushing process to avoid flushing any residues into the potable water tank.



NOTE

The EASYRO® 150/300/600 has an integrated rejection. The system does not produce clean water for the tank at the lower clean water outlet until the flushing cycle is completed in its entirety and all residues of the cleaning solution have been flushed out.



PREPARING THE CLEANING SOLUTION FOR ALL EASYRO® SYSTEMS

To prepare the cleaning solution, please open the canister from the basic maintenance kit.

Please use the included disposable gloves and breathing mask for your safety when opening the concentrate. Dilute the cleaning concentrate with fresh water according to the mixing table (page 5).

Then screw the cap back on the canister with the cleaning solution and shake it until water and concentrate are mixed thoroughly. Insert the suction tube (included in basic maintenance set) into the connector on the cap of the canister.

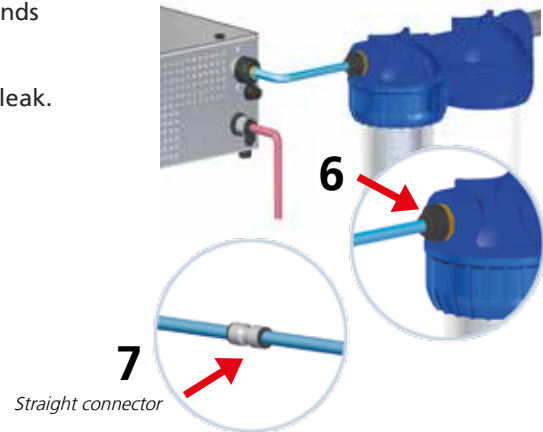
Now disconnect the tube (6) from the outlet of the pre-filter housing. Take the straight connector (basic maintenance kit) and connect this tube with the suction tube on the canister by pushing the two tube ends into the connector (7).

Please make sure that all connections are fastened firmly and do not leak.



NOTE

Both systems, the EASYRO® 480 and the 600, are equipped with 2 water inlets that are connected with one another. Please remove these two tubes directly from the system and use the Y-connector included in your basic maintenance kit to connect both tubes.



VIEW OF TUBING CONNECTIONS FOR MAINTENANCE

EASYRO® 60/120/240/480



EASYRO® 150/300/600



SUCTIONING THE CLEANING SOLUTION

Now reinsert the power plug into the power socket (6).
Depending on system type, the display now depicts "FILTER CHANGE",
"FILTER RESET" or no message.

EASYRO® 60/120/240/480

Press ESC + ◀ arrow left and hold down both buttons until
„SUCTION MEMBRANE CLEANING“ appears.

EASYRO® 150/300/600

Press F4 and hold down button until "SUCTION MEMBRANE CLEANING" appears.



NOTE

A „60 seconds“ timer is displayed with older models.
Now press OK.

The EASYRO® system now suctions in the cleaning solution for 60 seconds. As soon as the entire solution is suctioned into the system and before the system can draw in air (= canister almost empty), unplug the mains plug from the socket (7).

With the EASYRO® 240/300 and 480/600, the suction process should be repeated 2 to 3 times until the entire cleaning solution has been suctioned into the system.

THE CLEANING SOLUTION SHOULD NOW REMAIN IN THE SYSTEM FOR ABOUT 30 MINUTES.



CHANGING THE FILTER IN THE PRE-FILTER HOUSING

While the cleaning solution is working in the membranes, please change the pre-filters in the double filter housing. Do so by unscrewing the union nut of the pre-filter housing with the included filter key and take out the gasket rings.

!!! ATTENTION !!!

Both pre-filter housings are filled with water. Please use a bucket or a similar container to remove the water.

If you have a sediment filter in chamber 1 and an activated carbon filter in chamber 2, please replace both.

If you have a softener cartridge (transparent granulate) in chamber 2, please replace only the filter insert in chamber 1. The granulate of the softener cartridge dissolves over time. It does not need replacing until the granulate material is almost completely dissolved.

Please clean the union nut, sight glasses and gaskets of the pre-filter housings with lukewarm water before reinserting the filter inserts.

Replace the gasket rings and screw down the union nut with the filter key. Make sure the filter housings are tight and do not leak.

RINSE THE PRE-FILTERS FOR MIN. 3 MINUTES INTO THE COLLECTOR. THE RINSING WATER FROM THE FILTERS MUST NOT BE ALLOWED TO ENTER INTO THE EASYRO® DEVICE. RINSING WATER DAMAGES THE MEMBRANE!!!

Dispose the used filter insert from chamber 1 as normal household waste.



FLUSHING OUT THE CLEANING SOLUTION

After the residence time of the cleaning solution, please disconnect tubes from the plug connection (9). This is done by pressing on the holding element and then pulling out one tube after the other.

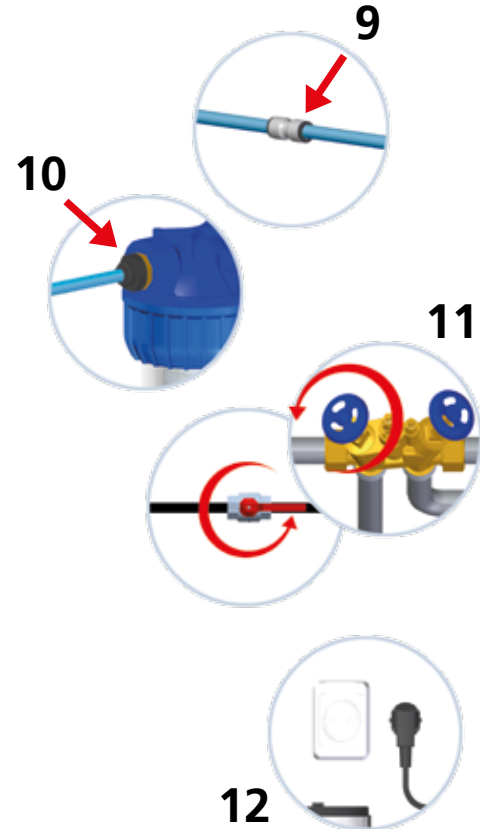
Now reinsert the water supply tube of the system into the connector of the pre-filter housing (10). If you use the EASYRO® 480 or 600 system, please reinsert both fresh water supply tubes into the corresponding connections of the system.

Open the main water supply line (11) again. Make sure all lines and connections are correctly positioned and do not leak.

Reinsert the power plug into the power socket and acknowledge with OK. The system starts the flushing process and flushes the cleaning solution from the membranes into the sewer.

Model	Flushing time
EASYRO® 60/120/150	mind. of 3 minutes
EASYRO® 240/300	mind. of 5 minutes
EASYRO® 480/600	mind. of 10 minutes

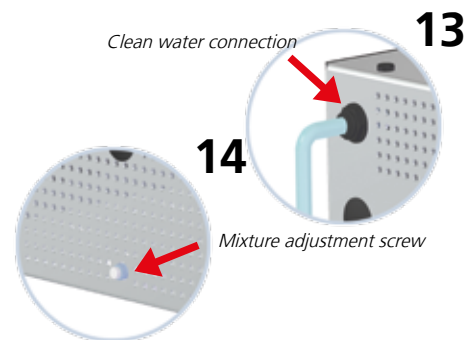
After the flushing process, disconnect the power plug again (12).



RESTORING TO STANDARD OPERATION

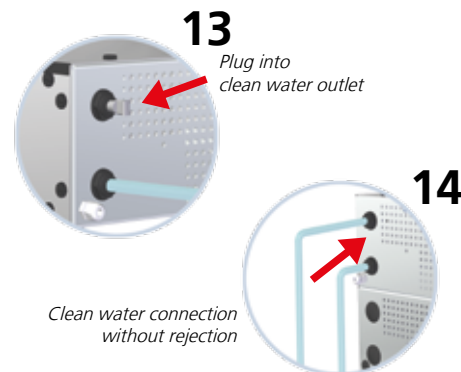
EASYRO® 60/120/240/480

Remove the tube of the clean water connector (13) and reinsert the tube leading to the tank back into the clean water connector. If necessary, set the mixture adjustment screw (14) back to its original position.



EASYRO® 150/300/600

Remove the plug from the clean water outlet (13) and reinsert the tube connected initially into the connector (14).



COMPLETING MAINTENANCE

Reinsert the power plug into the power socket (15).

Now the maintenance of the EASYRO® system is complete and standard operation continuous.

After the maintenance process, operating hours are reset to 4500 hours automatically.

The system starts in production mode (unless tank is full).

Dispose of all the remainder of the cleaning solution into the sewer and rinse the used canister and both maintenance tubes to ready them for the next maintenance.

Now you have 4500 hours of operation available until the next maintenance is due (= six months in continuous operation).



15

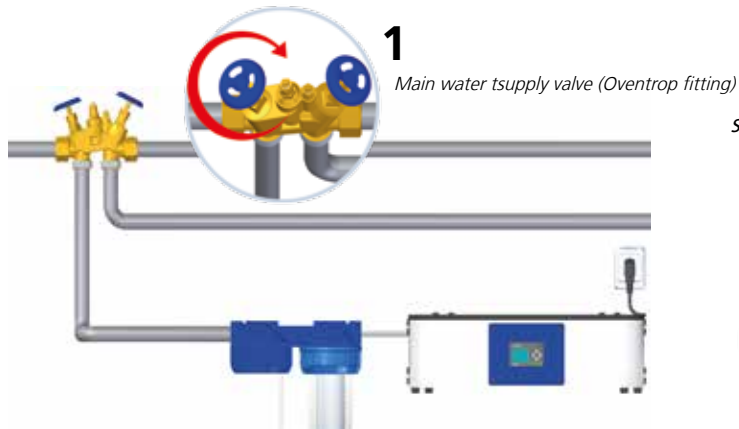
EASYRO
Production
Con: 60
Mainten.: 4500

EASYRO
We 11:12
STAND BY
2017 - 02 - 16

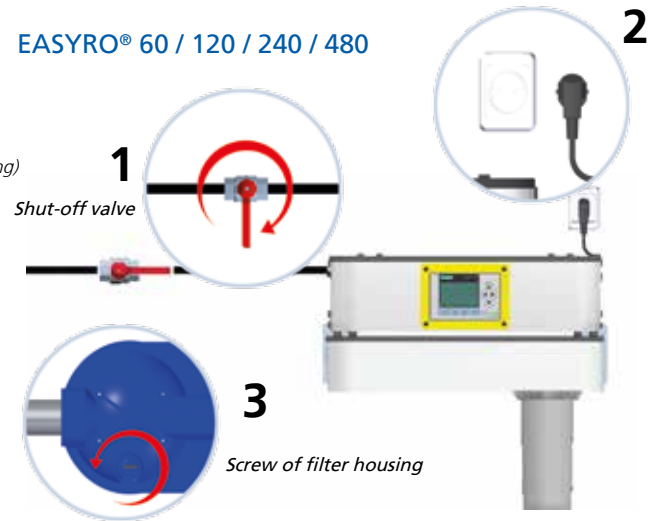
FILTER REPLACEMENT IN THE PRE-FILTER CASING WITHOUT MAINTENANCE

If you only wish to replace the pre-filters without carrying out any maintenance, you do not need to change any display settings.

EASYRO® 60 / 120 / 240 / 480



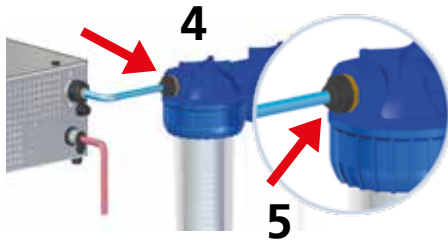
EASYRO® 60 / 120 / 240 / 480



Close the main water shut-off valve (1) and disconnect the power plug (2) of the EASYRO® from the mains power supply.

If you are using a membrane vessel, your water treatment system is under pressure.

To release pressure, you must turn the screw (3) of the filter housing with a screwdriver until the pressure can escape.

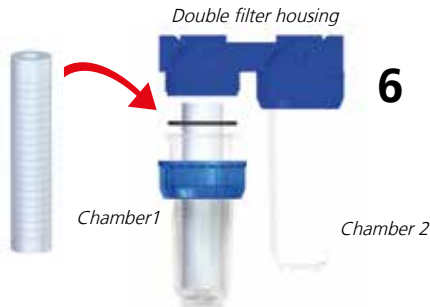


Detach the tube which connects the pre-filters to the EASYRO® device by retracting the fastening element and pulling the tube out of the connector fitting. Now connect the section of tubing from the basic equipment maintenance kit to the pre-filter casing. You need this tube to direct the rinsing water for the filter into the collector.

Do so by unscrewing the union nut of the pre-filter housing with the included filter key and take out the gasket rings.

!!! ATTENTION !!!

Both pre-filter housings are filled with water. Please use a bucket or a similar container to remove the water.



Please clean the union nut, sight glasses and gaskets of the pre-filter housings with lukewarm water before reinserting the filter inserts.

If you have a sediment filter in chamber 1 and an activated carbon filter in chamber 2, please replace both.

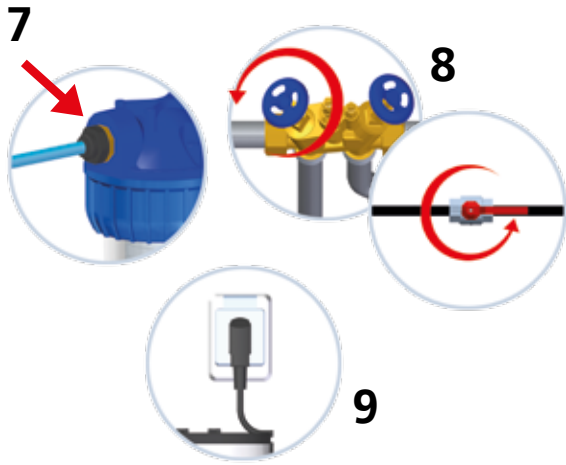
If you have a softener cartridge (transparent granulate) in chamber 2, please replace only the filter insert in chamber 1. The granulate of the softener cartridge dissolves over time. It does not need replacing until the granulate material is almost completely dissolved.

Nevertheless, please clean the filter housing and the inserts of both chambers with lukewarm water.

Replace the gasket rings and screw down the union nut with the filter key.
Make sure the filter housings are tight and do not leak.

RINSE THE PRE-FILTERS FOR MIN. 3 MINUTES INTO THE COLLECTOR. THE RINSING WATER FROM THE FILTERS MUST NOT BE ALLOWED TO ENTER INTO THE EASYRO® DEVICE. RINSING WATER DAMAGES THE MEMBRANE!!!

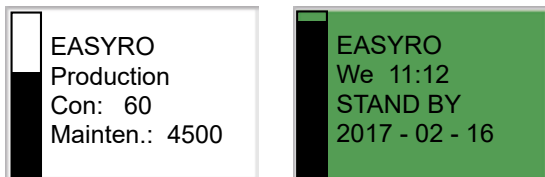
Dispose the used filter insert from chamber 1 as normal household waste.



Reconnect the device's water supply tube (7) to the connector fitting on the pre-filter casing. For the EASYRO® 600 please reattach both water input tubes to the device. Open up the stopcock (8) again.

Make sure that all tubes and their connections are well attached and watertight.

Plug the device into the mains socket (9) again. Depending on how full the tank is, the EASYRO® will not go back into production or ready mode.



The filter has been successfully replaced.

CLEANING AND CARE



IMPORTANT

Never clean the EASYRO® unit with a steam cleaner.
Use a soft, damp cloth to clean the housing and the display.
Do not use abrasives, abrasive cleaning sponges, solvents or metal objects.

DECOMMISSIONING THE SYSTEM

If the system is not going to be connected to the power grid for more than 7 days, the EASYRO® must be preserved; otherwise the automatic cycle of flush cannot be executed anymore and after ten days, there is a danger of bacterial contamination.

The production of healthy and potable drinking water cannot be ensured anymore.

Please contact your retailer to order the appropriate preservative.

The suction process with the preservative is the same as the suction process for the membrane cleaning solution. The description is listed in the "Maintenance Instructions" chapter.

